



GOVERLAN | REACH

YOUR IT REMOTE MANAGEMENT & SUPPORT SOLUTION

Goverlan REACH vs TeamViewer

UPDATED: 03/09/2018

GOVERLAN.COM



Looking for a TeamViewer alternative?

Read our side-by-side comparison to understand the key differences between the two remote management solutions and why Goverlan is the best alternative.

TeamViewer® was originally designed as a collaboration tool and later expanded to provide some IT remote support and management features. As a result, it's remote access and IT management features are limited.

Goverlan was founded in 1998 with the specific mission to develop a simpler, more secure, more agile remote support and IT management software. Goverlan Reach's architecture has been specifically designed to solve the daily issues that their system administrators and IT support staff encounter. Goverlan uses behind-the-scenes tools to support users without interrupting them.

IS GOVERLAN THE RIGHT ALTERNATIVE FOR ME?

NO if ...



Individuals Who Need to Access Their Computer Remotely

If you're an individual and not an IT professional looking for a solution to access your personal or work computer remotely.



Require a Cloud-based Offering

If you favor the convenience of a cloud-based remote IT management solution over the security of an on-premises offering.



Require MacOS / Linux Support

If you need to support a large base of non-Windows platforms.

YES if ...



Security

Secure privileged access without opening your systems to a vector attack.



Pricing

If you want to lower total cost of ownership via scalable pricing.



Easy Onboarding

Instant detection and onboarding of large base of devices for IT support and management.



Reduced Time-To-Resolution

Work behind-the-scenes without disruptive remote control (no end-user interruption).



Global Endpoint Management

Globally manage systems (e.g. Software and patch deployment, desktop config.)



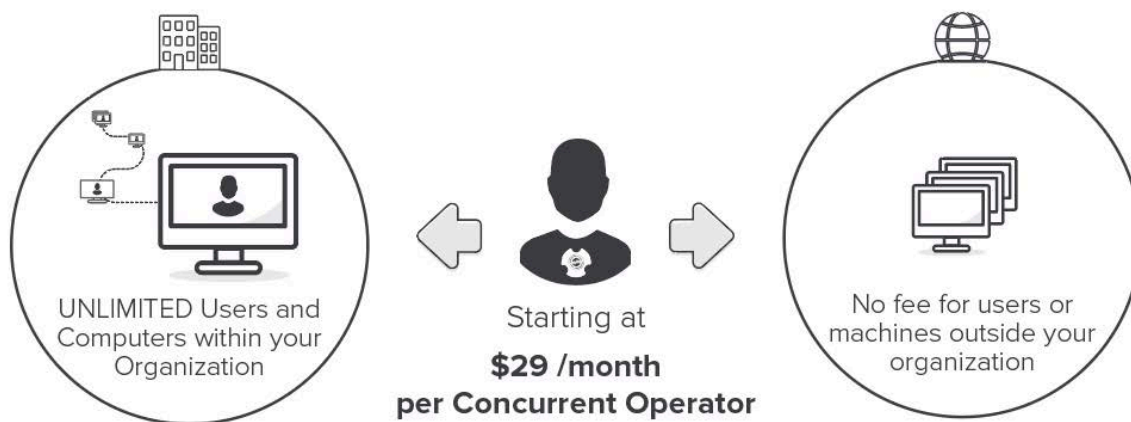
Fast Remote Support & IT Management

[Schedule a Demo](#)

SAVE MONEY WITH A LOWER COST OF OWNERSHIP

To help you navigate the nuances in licensing and the difference in pricing, we have put together comparison tables summarizing the total cost of ownership for each edition. It estimates the amount of savings you will get from switching to Goverlan.

Goverlan Reach is licensed on a per-concurrent-tech basis starting at \$29 per month, with unlimited management of end-users and machines within your organization. If you need to manage devices outside of your organization over-the-internet, concurrent node licenses only cost \$6 per year (or about 50c per node per month!).



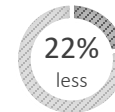
TeamViewer Premium vs Goverlan Reach Professional

	TeamViewer Premium	Goverlan Reach Professional
Concurrent Technicians	1 with max 1 concurrent support sessions	1 with unlimited concurrent support sessions
Concurrent On-Demand / Unattended Endpoint Management	Up to 400	Unlimited within your organization Over the internet: 15 (then \$6 per endpoint per year)
Licensing Format	Subscription billed annually	Subscription billed monthly or annually
Price	\$1,008 / year <small>(price info from 01/01/18)</small>	\$828 / year or 17% cheaper

17% less

TeamViewer Premium vs Goverlan Reach Enterprise

	TeamViewer Premium	Goverlan Reach Enterprise
Concurrent Technicians	1 with max 3 concurrent support sessions	1 with unlimited concurrent support sessions
Concurrent On-Demand / Unattended Endpoint Management	Up to 1000	Unlimited Endpoints (Internal or External)
Licensing Format	Subscription billed annually	Subscription billed annually
Price	\$1,992 / year <small>(price info from 01/01/18)</small>	\$1,548 / year or 22% cheaper



WHEN SECURITY IS A KEY REQUIREMENT

It is important for IT departments to be able to provide a positive and effective IT support experience with flexible Workflow. However, it shouldn't be to the detriment of security and integrity.

Goverlan Reach adheres to the highest security standards in the industry:

- On-premises solution – privileged access information is never stored on the cloud
- Encrypted communications
- Uses the underlying operating system's native security to authenticate and authorize support actions
- (no proprietary elevated access point is exposed)
- Centralized and distributed auditing of every action performed on machines by operators
- Supports HSPD-12 / FIPS201 / FIPS140-2 compliance

GOVERLAN IS SO MUCH MORE THAN A REMOTE DESKTOP TOOL

A Remote Desktop Access tool such as TeamViewer is straightforward. However, it has drawbacks:

- It interrupts the remote user as they watch you do your work, instead of doing theirs
- Gaining privilege access and performing advanced management tasks is difficult

What if you could fully support your machines without interrupting your end-users? Execute advanced management tasks and support duties in the background while the remote user continues working.



Reduced Time-To-Resolution

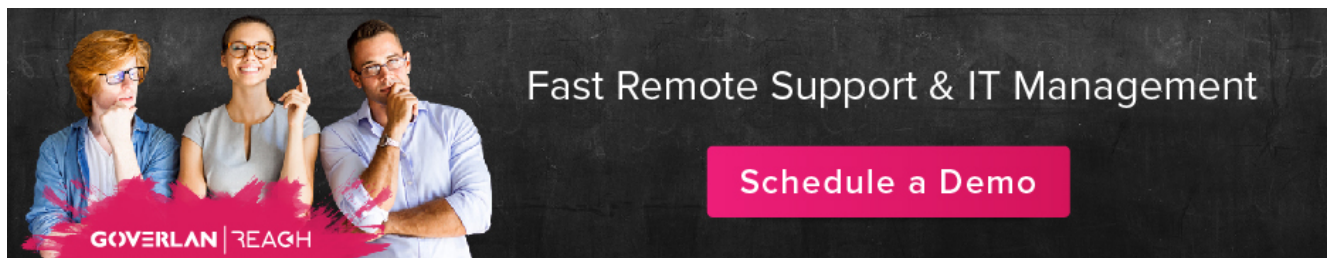
via powerful IT remote support tools and behind-the-scenes systems' management. Goverlan Reach works "behind-the-scenes" both on machines and servers. You can query full system information, push software packages or patches, attach new printers or drive mappings, configure your users' desktops or fix system issues all in the background, without end-user interaction or interruption.



Global Endpoint Management

Globally manage systems (e.g. Software and patch deployment, desktop config).

You can also perform global IT management across your systems using Goverlan Reach IT Process Automations. Easily deploy security updates or policies, update your anti-virus signature files, run compliance scans and many other tasks, all with a few clicks.



GOVERLAN VS TEAMVIEWER: SIDE BY SIDE

SIDE BY SIDE COMPARISON ON KEY GOVERLAN FEATURES



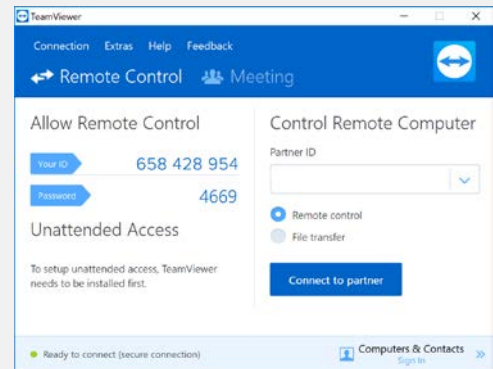
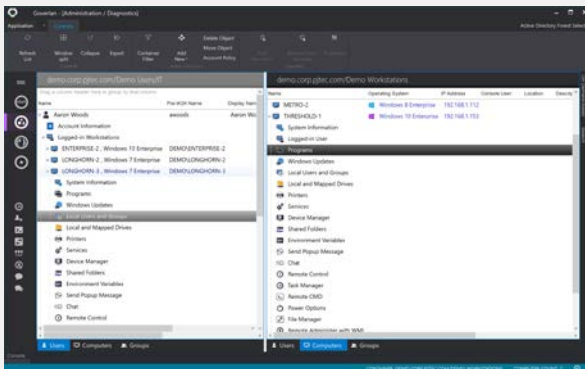
REMOTE DESKTOP ACCESS		
Active Directory Integration	✓	×
Peer-to-Peer Sessions	✓	×
On-Demand / Unattended Sessions over the internet	Unlimited Sessions/ Endpoints	✓
Connect to Users' Machines by User Name	✓	×
Supports Citrix & MSTS Session Shadowing	✓	×
Multi-Sessions Screen Activity & Health Counter Monitoring	✓	×
SmartCard Redirection	✓	×
Session Capture to Video/Snapshot	✓	✓
USERS & ENDPOINTS MANAGEMENT		
Query System Information	✓	✓
Supports Intel® vPro	✓	×
File System Management	✓	✓
Services & Devices Management	✓	×
Remote Script Execution	✓	×
Remote Shell / Command Prompt Access	✓	×
Active Directory Account Management	✓	×
Network Configuration Management	✓	×
Identity & Domain Relationship Management	✓	×
User Session Management	✓	×
Report User Logged-in Workstations Live	✓	×
Report User Login Events	✓	×
User Drive / Printer Mappings Management	✓	×
Power Management	✓	✓ Limited (reboot only)
Running Processes / Startup Programs / Performance Management	✓	×
Software & Patch Deployment & Inventory	✓	×
Local Account Database Management	✓	×
Shared File Resources Management	✓	×
PowerShell / VB Script Generator	✓	×
GLOBAL CHANGE MANAGEMENT via IT AUTOMATION		
Generate Granular and Comprehensive IT Reports	✓	✓
Automate Repetitive or Complex Global IT Processes	✓	×
Scan Scopes of Machines, Detect Customizable Configurations and React	✓	✓

USABILITY: AN IMAGE IS WORTH A THOUSAND WORDS

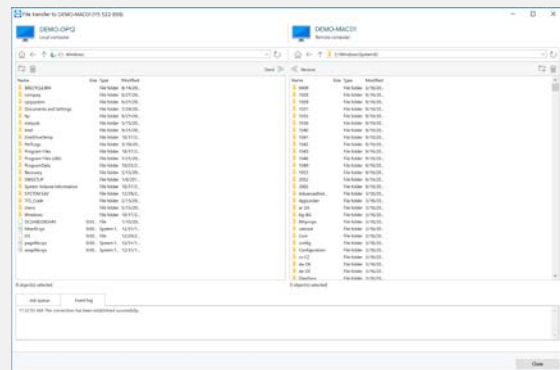
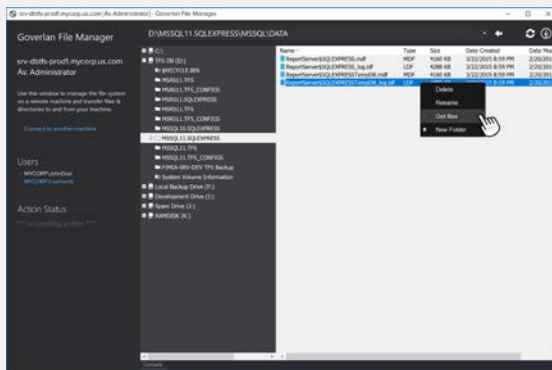
GOVERLAN REACH

TEAMVIEWER

REPRESENTATIVE CONSOLE



FILE TRANSFER



REMOTE DESKTOP ACCESS

